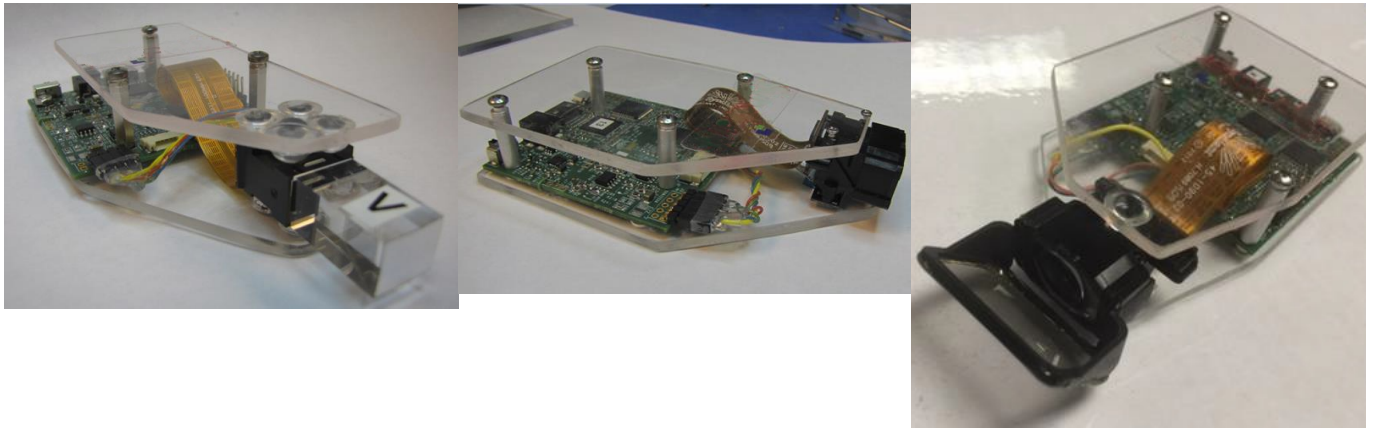


# 720P MONOCULAR DEVELOPMENT KIT



## Brief Description

The 720P Monocular Near to the Eye (NTE) Development Kit integrates the 720P HD LCoS Panel and a respective optical engine with key electronic components to control and evaluate the 720P light panel.

The kit includes in addition to the 720P HD LCoS panel a LCOS driver board with the driving ASSP (IC), an optical engine and software tools. With that the kit provides direct control of the 720P HD LCOS panel solution. By integrating the panel drive electronics, a LED/Laser synchronization and a host video input, the development kit allows the user to quickly evaluate the 720p LCoS panel with an existing light engine or electronics.

Optional an additional Windows GUI software can be included as part of the above described programming option. This Windows software enables the user to control the different projection display settings very easily in a graphical environment and thus to try out the different configuration options during the technology evaluation/ product development.

## Contact Information

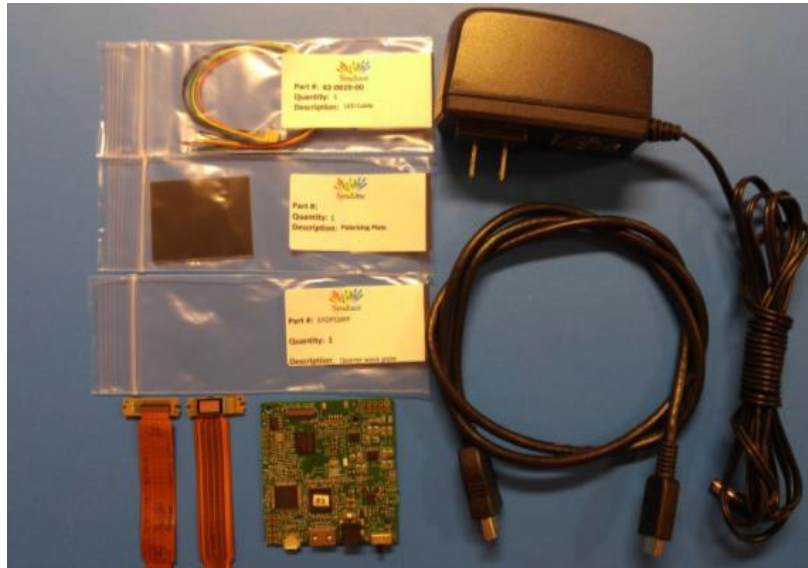
Dresden Microdisplay GmbH  
Maria-Reiche-Str 2  
D-01109 Dresden

## Content

The 720P Monocular Near to the Eye Development Kit includes the following components:

- The LCOS driver board with HDMI input
- One 720P HD LCOS Panel
- A 5V, 2.6A Power Supply
- A Laser/LED Enable Sync Connect Cable
- A HDMI Type-C Video Input Cable and
- One 75 mm flex to connect the panel
- One optical engine out of the following:
  - 720P monocular see through optical engine (above left)
  - 720P monocular immersive optical engine (above middle)
  - 720P monocular vertical see through optical engine (above right)

Info@Microdisplay.biz  
www.microdisplay.biz  
+49 (351) 41 88 97 60



## Development Kit w/o engine

In case no monocular optical engine is needed the development kit can also be ordered without the optical engine.

IN this case the development kit comes with some additional components as listed below:

- The LCOS driver board with HDMI input
- Two 720P HD LCOS Panel(s)
- A 5V, 2.6A Power Supply
- A Laser/LED Enable Sync Connect Cable
- A HDMI Type-C Video Input Cable and
- Two 75 mm flex to connect the panel
- One Quarter Wave Plate
- One Polarizing Plate
- Users Guide

In addition also for this development kit the programming option (described on the right) can be ordered separately, to enable a very easy evaluation and optimization of all the different panel parameters during evaluation of the 720P HD LCoS panel as well as during the final end product development phase.

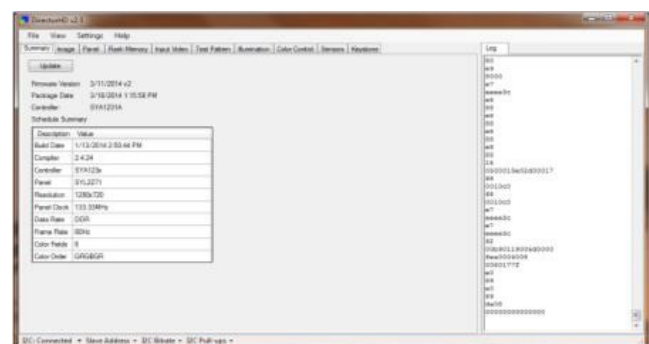
## Programming Option

- Windows GUI software
- Type A-to-Micro-B USB cable
- Support Documentation

## Optional Windows GUI SW



## Optional Windows GUI SW



## Contact Information

Dresden Microdisplay GmbH  
Maria-Reiche-Str 2  
D-01109 Dresden

Info@Microdisplay.biz  
www.microdisplay.biz  
+49 (351) 41 88 97 60